

# Sew Spoiled Designs

## Weekender Travel Tote

By Leah Williams

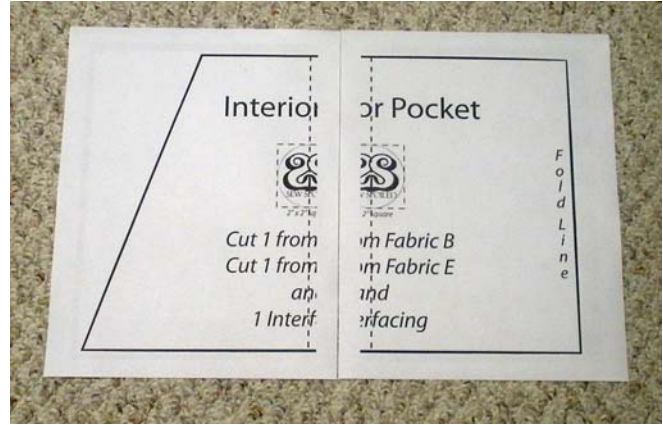


Sew Quick, Sew Easy,  
Sew Spoiled

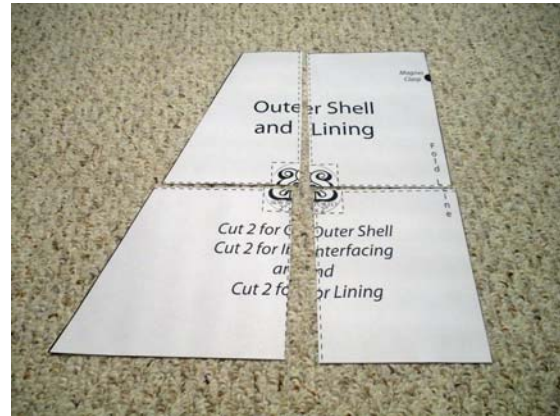
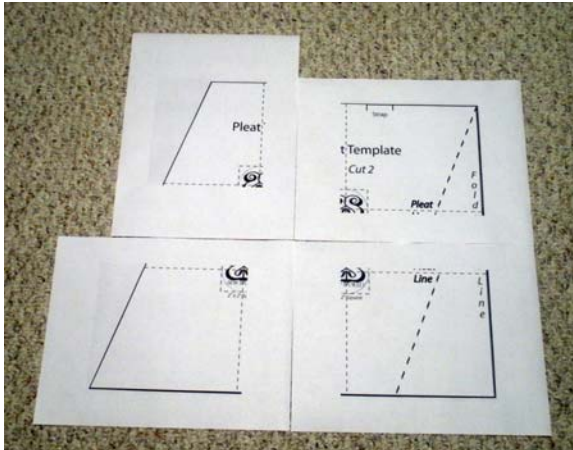
© Sew Spoiled 2009 Sew Spoiled patterns content within the tutorial is copyrighted and cannot be reproduced electronically or copied and distributed. However, the finished product that you as an independent Home Seamstress, produce can be sold in your shop, provided the pattern was purchased from an authorized dealer and you state in the description: "This is an original design by Leah Williams from her Sew Spoiled Weekender Tote pattern." All items for sale must be handmade by you. Contracting with others to mass produce the designs is expressly prohibited.

[www.sewspoiled.blogspot.com](http://www.sewspoiled.blogspot.com)

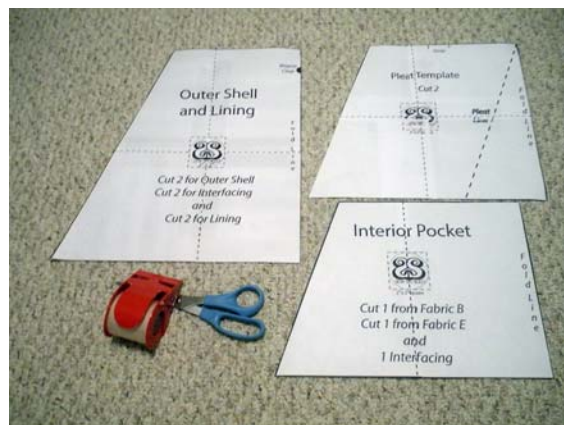
## Sew Spoiled Weekender Travel Tote



**Step 1A:** Print out the pattern templates on pages 10 –19. Make sure the scaling is set to None and the Auto Center and Rotate is checked in the print set up.



**Step 1B:** Cut out the shapes and tape them together. Cut directly on the bold black line and leave some over lapping room along the dotted lines. You will have 3 large template pieces the pleat, pocket and outer shell. If you know that you will make more than one of these totes make rectangle templates for other pieces listed on page 3 and label each piece. *I highly recommend making one 15"X15" template and folding it for the smaller 15"X11" template and doing the same for the 5" pieces. Make one 5" template for the longest rectangle shape 5"X28" and fold it for the other measurements (Make sure you mark it so you have it recorded for the next weekender tote you make.)*



# Sew Spoiled Weekender Travel Tote

## Materials:

Fabric A outer shell (side panels of pleat) .5 yard  
 Fabric B outer shell (inside pleat), tote base, lining and interior pocket 2.5 yards,  
 Fabric C top border: .5 yard Fabric D straps: .5 yard  
 Fabric E interior pocket .5 yard  
 Heavy weight interfacing 3 yards

*(I like to used fusible fleece but craft fuse, Pellon 809 works well and is easier to sew.)*  
 1 magnet clasp

## Step 1C: Cut out the pattern pieces.

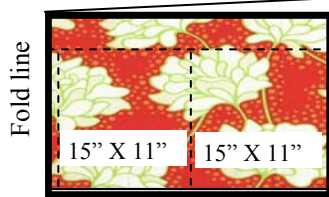
### Fabric

- 4- Outer shell side panels 15"X 11" from Fabric A
- 2- Outer shell inside panels 15"X15" from Fabric B
- 2- Top border panels 5"X 20" from Fabric C
- 2- Straps 5"X 28" from Fabric D
- 2- Lining cut using template from Fabric B
- 1- Pocket using template from Fabric E and B
- 1-5"X21" Tote Base from Fabric B (outer shell)
- 1-5"X21" Tote Base from Fabric B (lining)

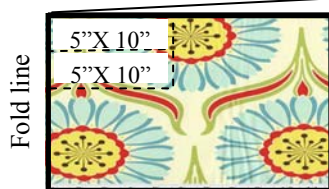
### Interfacing

- 2- 15"X36" Fusible interfacing for the pleated fabrics after they are sewn together.
- 2- 5"X21" Fusible heavy weight interfacing pieces for the base
- 2- 5" X20" Fusible heavy weight interfacing for the top border panels
- 2- 2.5"X 28" Fusible heavy weight interfacing for the straps
- 2- Fusible heavy weight interfacing for the lining use template
- 1- Fusible heavy weight interfacing for pocket use template.

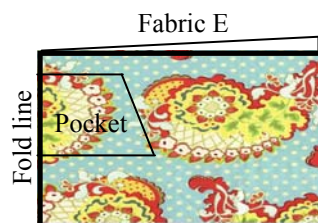
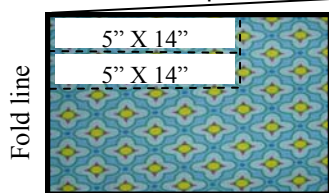
Fabric A  
 Cut 4 Outer shell side panels 15"X 11"



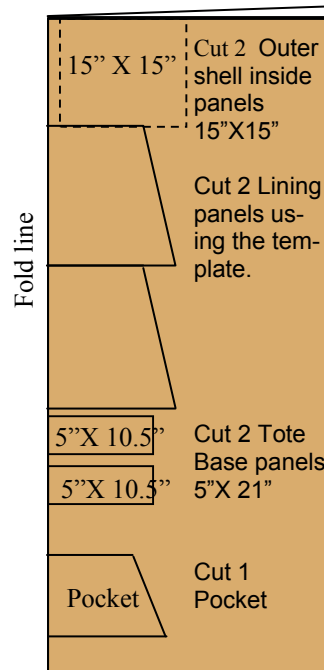
Fabric C  
 Cut 2 Top border panels 5"X 20"



Fabric D  
 Cut 2 Straps 5"X 28"



Fabric B





**Step 2:** Place the 15" X11" Fabric A panel and the 15"X15" Fabric B panel right sides together and sew a 1/2" seam allowance along the 15" side of the two panels. (Diagram 2a) Now place the other 15"X11" Fabric A panel right sides together on top of the 15"X15" Fabric B panel. (Diagram 2b) Sew again a 1/2" seam allowance along the 15" side of the two panels. Follow this step again for other patchwork pleat.



**Step 3:** Iron the four seams open on the two patchwork pleat panels. Then iron the two outer shell patchwork panels to the 15"X 36" fusible heavy weight interfacing pieces for each side of the bag. Fold the patchwork panel in half, right sides together and crease. Then fold the patchwork panel at the seams, iron and pin each seam to the center of the panel at the center crease. (Diagram 3a-b) Let the sides of the outer shell fan out. The top of the pleat will not be straight as shown in Diagram 3b-c. Approximately 10" of fabric B, the center fabric, will show at the bottom of the pleat. Sew 1/4" from the center of the pleat in a straight line over both sides. Do this step again for the second pleated outer shell





4a



4b

**Step 4:** Iron the two 5"X 28" strap pieces to the center of each 2.5"X 28" fusible heavy weight interfacing piece. (Diagram 4a) Fold once in half lengthwise and iron, fold outer edges inward toward the center line and iron, (Diagram 4b) finally fold the strap in half again and iron. (Diagram 4c) Do this again for the other strap. **Fuse all interfacing pieces to the coordinating fabrics.**

Take the two folded and ironed straps and sew 1/4" seam allowance along both sides, first the open side of the strap and then the folded side of the strap. (Diagram 4d)



4c



4d

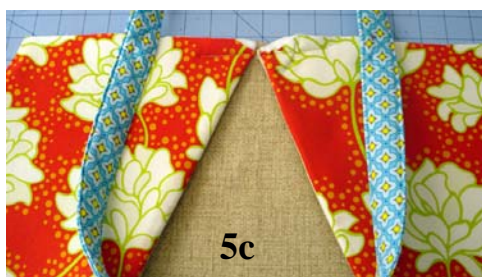
**Step 5:** Fold the pleated patchwork panels in half at the center pleat wrong sides together. (Diagram 5a) Cut both pleated patchwork panels using the pleat template. Make sure both pleated outer shell panels are the same in size. Diagram 5a is the pleated panel before cutting and Diagram 5b is after. Place the straps upside down on either side of the sewn pleat rough edges together and pin. (This way your machine will not have to sew over too many thick layers of material.) The strap placement lines on the template are approximate, so please place your straps on either side of your pleat shown in diagram 5d. (Diagram 5c-d)



5a



5b



5c



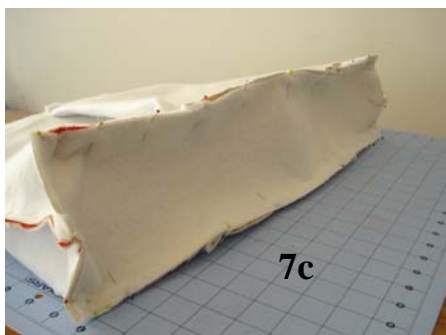
5d



**Step 6:** Place the 5"X 20" border on top of the strap that is on top of the pleated outer shell right sides together. The strap is sandwiched in between the border and pleated panel. (Diagram 6a) Make sure the straps are the correct length for you. Adjust the strap to your own liking and pin in place. Sew a  $\frac{3}{4}$ " seam allowance straight across the top. (*Make sure you sew over the pleated seam line, if you do not the stitching will show!*) (Diagram 6b) Open the panel up iron the border up so in the back the border is over the seam. Also press the straps up and pin. Topstitch  $\frac{3}{8}$ " seam allowance over the border and straps. (Diagram 6c) Cut the excess border using the outer shell template. (Diagram 6d)

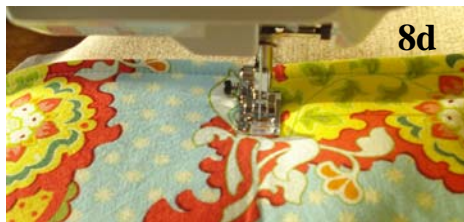


**Step 7:** Place both completed outer shell panels right sides together and pin both sides of the bag together. Sew a  $\frac{1}{2}$ " seam allowance down both sides of the weekender tote. (Diagram 7a) Take the 5"X21" tote base and pin the middle of the 5" side of the base to the side seam of the bag right sides together. (Diagram 7b) Pin the rest of the base to the bag. Make sure the short sides of the base are aligned with the side seams. (Diagram 7c) *Approximately 10" of fabric B, the center fabric, will show at the bottom of the pleat.* Sew the base to the bottom of the bag. With the bottom of the bag facing up sew around the base using a  $\frac{1}{2}$ " seam allowance. (Diagram 7d) *At the base corners pivot your needle by putting it in the down position and lifting up the presser foot, move the fabric 90 degrees. Then lower the presser foot and sew to the next corner.* Trim the corners and turn right side out. Check your entire seam (inside and out) when you have sewn this step to be sure that all corners are caught inside the seams. You are finished with the outer shell!!!!

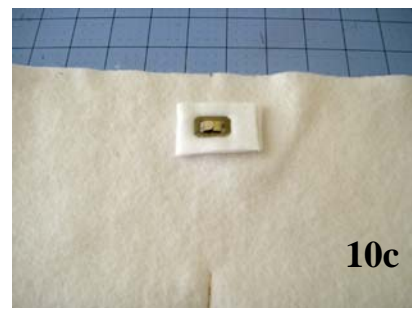
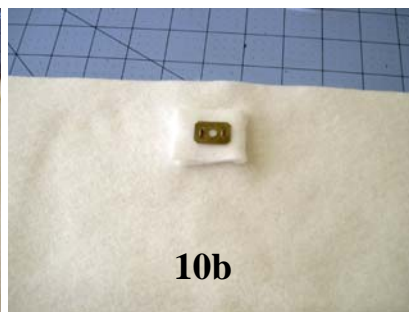
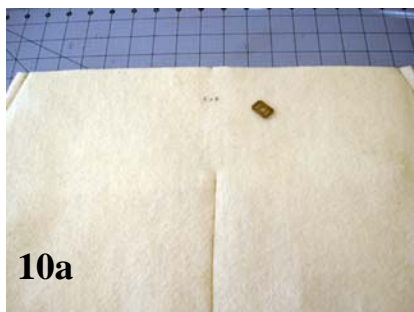




**Step 8:** Place the two pockets fabrics E and B right sides together (*One pocket piece is fused with interfacing.*) and sew a 1/2" seam allowance across the top of the pocket. Flip the pocket right side out and iron. (Diagram 8a) At the fold, sew a 1/4" seam allowance across the top of the pocket. (Diagram 8b) Pin this pocket to the lining 5" from the top of the lining, rough edges together. Pin the pocket to the lining and sew down the center of the pocket and lining. This makes 2 slip pockets! (Diagram 8d-e)



**Step 9:** Pin the pocket panel and the lining panel right sides together. Sew a 1/2" seam allowance down both sides of the lining. (Diagram 9a)



**Step 10:** Use the template for the placement of the magnet clasp. (Diagram 10a) Mark the lining on either side. Cut small holes on the marks on both lining panels. Take the 2"X 2" heavy weight interfacing and cut it in half. Fold the 2"X 1" in half so it is 1"X 1", place the metal plate on the folded interfacing and draw the straight lines onto the interfacing. Cut the interfacing through both layers. Now you push the tabs of the clasp through the holes of the fabric right side facing. (Diagram 10b) On the backside place the interfacing over the tabs of the clasp. Finally place the metal plate over the tabs of the clasp. Fold the tabs over the center of the plate. (Diagram 10c) Repeat for the other side.



**Step 11:** Take the 5"X21" tote base and pin the middle of the 5" side of the base to the side seam of the bag right sides together. (Diagram 11a) Pin the rest of the base to the bag. Make sure the short sides of the base are aligned with the side seams. (Diagram 11b) Sew the base to the bottom of the bag. Sew with the base of the tote up, start to sew on the lining side without the pocket. Sew around the base using a 1/2" seam allowance until you get back around to the lining side without the pocket. Leave a 4" opening on the side without the pocket, so we can turn the bag right side out later in the project. (Diagram 11c) *At the base corners pivot your needle by putting it in the down position and lifting up the presser foot, move the fabric 90 degrees. Then lower the presser foot and sew to the next corner.* Leave the lining wrong side out.



**Step 12:** With a ruler, draw a straight line on the interfacing side of the bag's lining 1/2" from the top. This will be a great sewing guide! Place the outer shell inside the lining right sides together. Tuck the straps in and pin top edges of the outer shell and lining together. *Make sure the side seams line up.* (Diagram 12a) Sew 1/2" seam allowance around the entire weekender tote using the line you drew earlier. Trim the excess and turn the bag right side out through the opening in the lining. (Diagram 12b) Iron the top edge of the weekender tote and topstitch using a 1/4" seam allowance around the top edge. (Diagram 12c) Iron the lining opening closed and sew a 1/4" seam allowance to close the opening. (Diagram 12d) Tuck the lining back into the bag, iron and you are finished!!



## More Suggestions:

1.) If you want to make your weekender tote sturdier, cut out two side pieces and one base piece of plastic canvas (used for cross stitching) the shape of your weekender tote. Roll it up and insert it through the lining opening. After sewing the lining closed, tack the plastic canvas by using a few stitches through the lining and under the outer shell pleat on both sides of the bag. It will make your weekender tote stand up for itself.



2.) Embroider or appliqué initials in the center pleat.



3.) Make small accessories from the scraps of this bag like a Sew Spoiled Wristlet, Sew Spoiled Ladybug or Wallet (found at [www.SewSpoiled.etsy.com](http://www.SewSpoiled.etsy.com) and [www.pinkchalkfabrics.com](http://www.pinkchalkfabrics.com) ) and give it to a friend as a gift set.



4.) Pack your New Weekender tote and go on an exciting adventure!!!!



Outer  
and

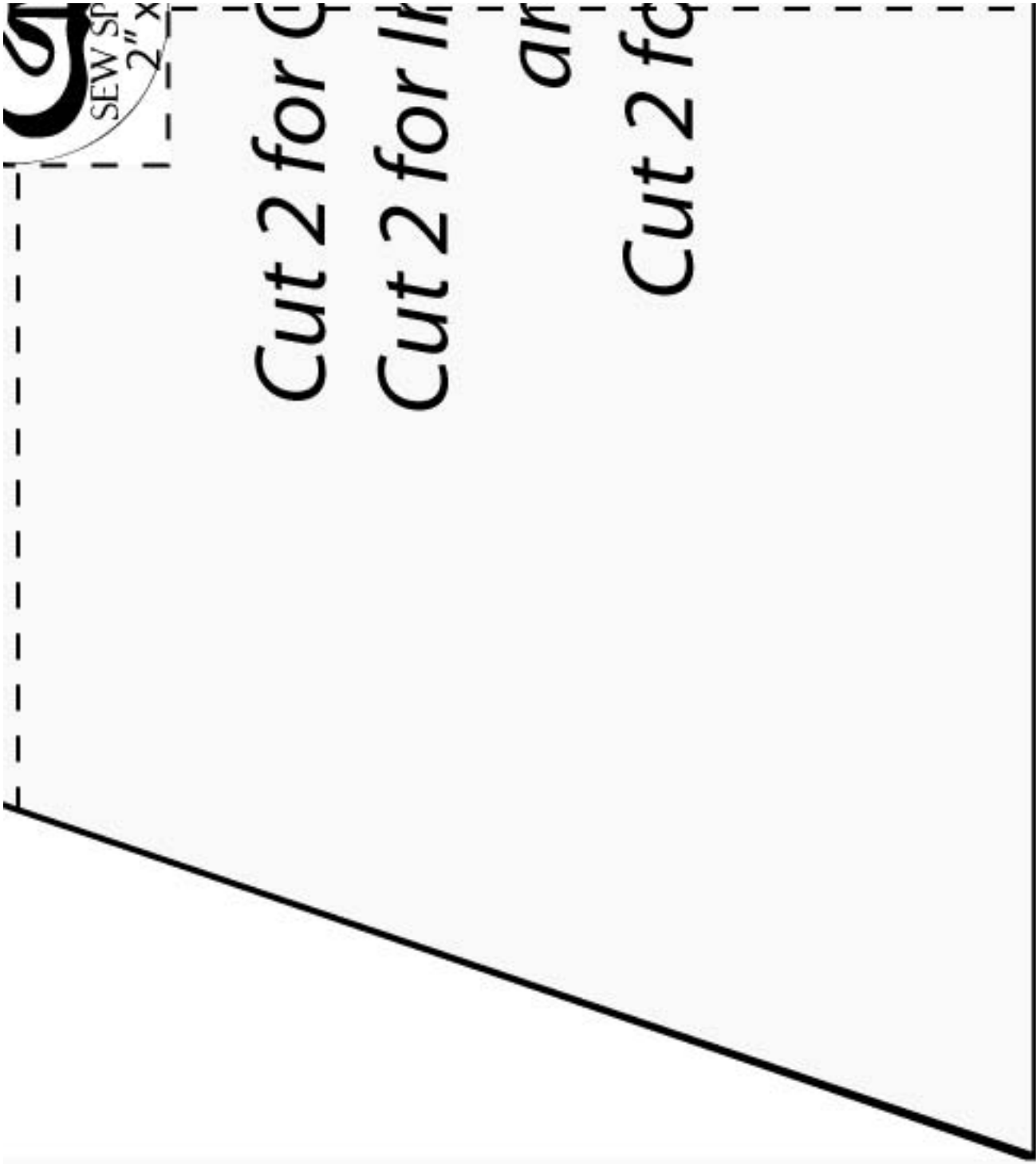


*Cut 2 for C*

*Cut 2 for I*

*an*

*Cut 2 for*



*Magnet  
Clasp*

er Shell  
Lining

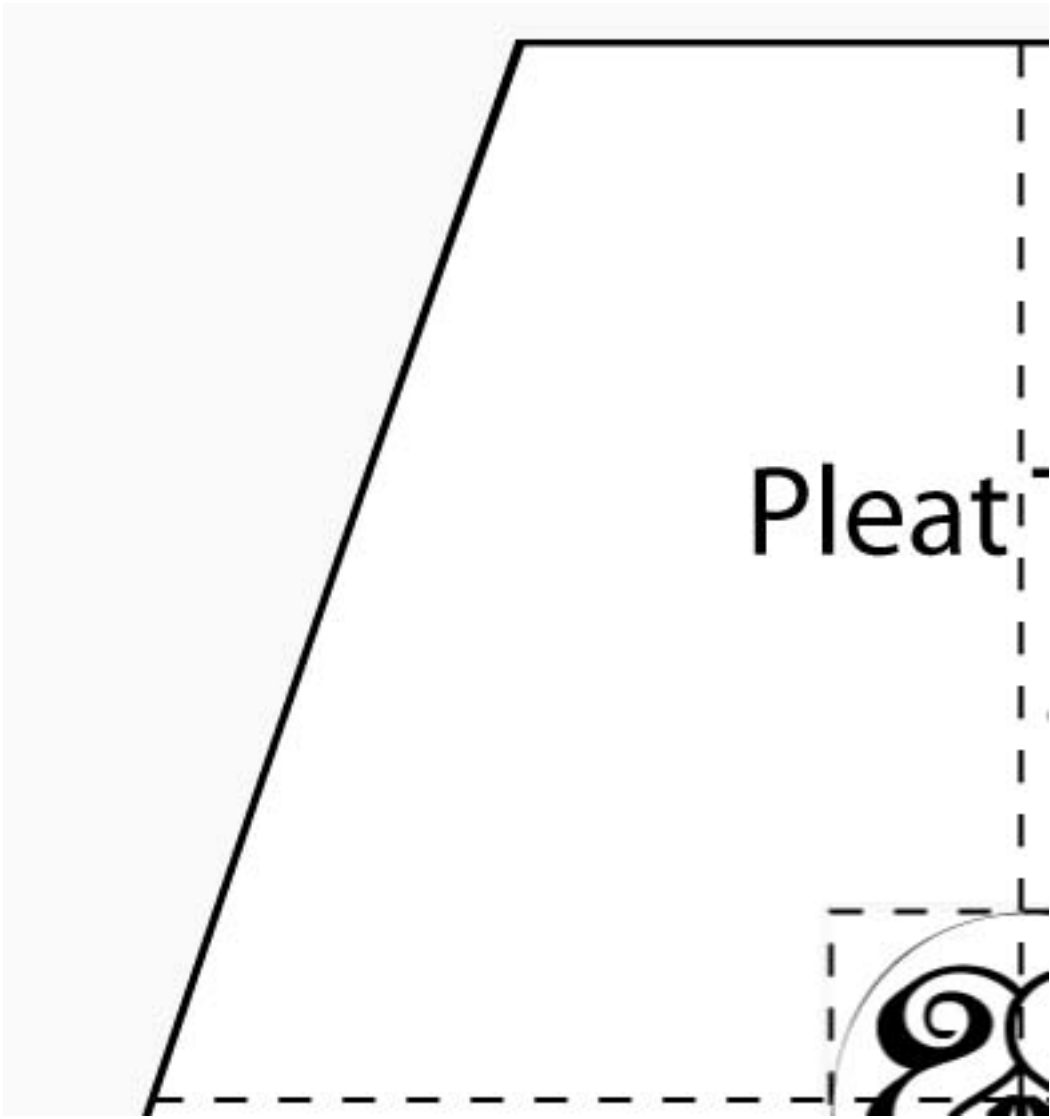
F  
O  
I  
d  
L



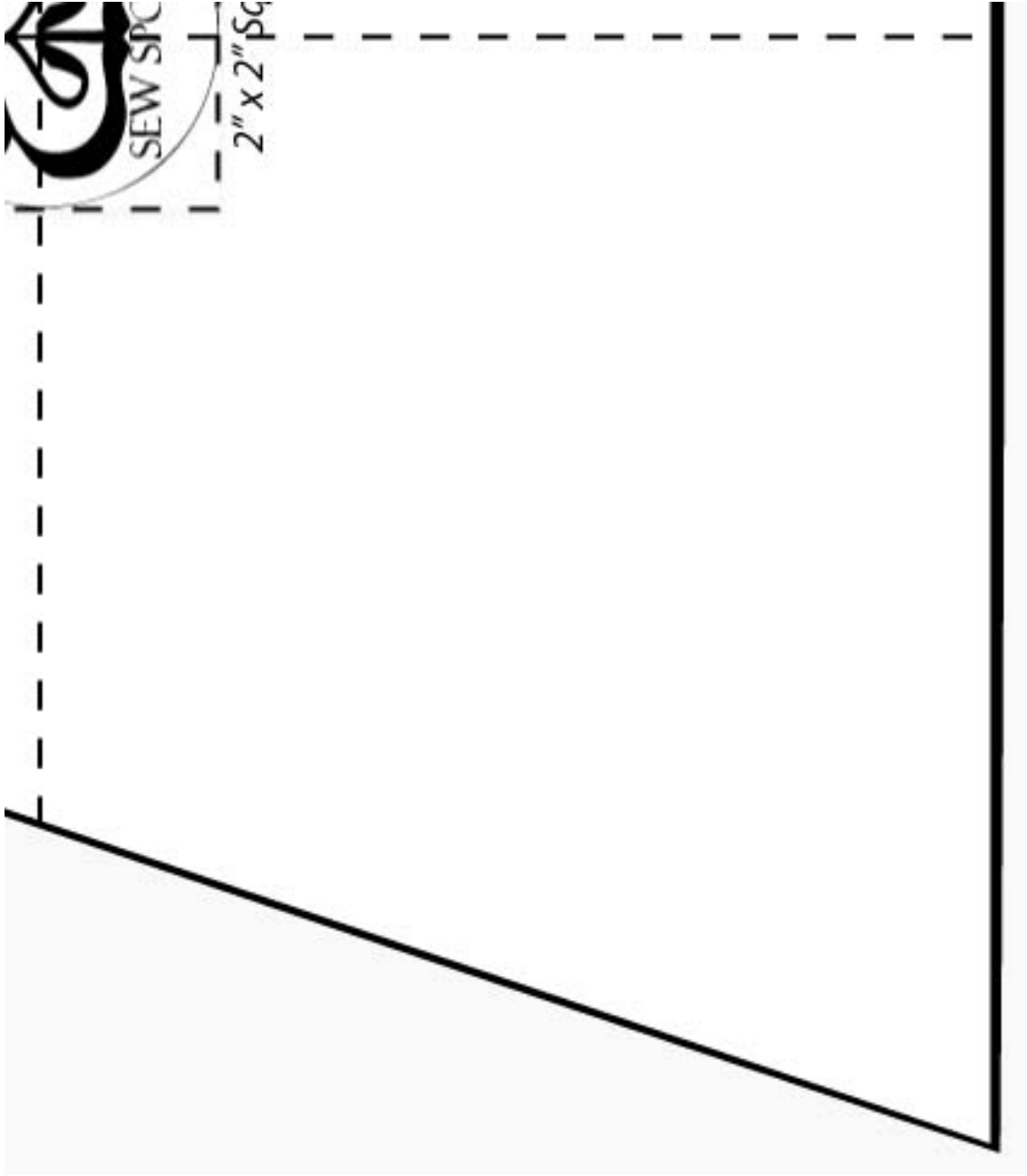


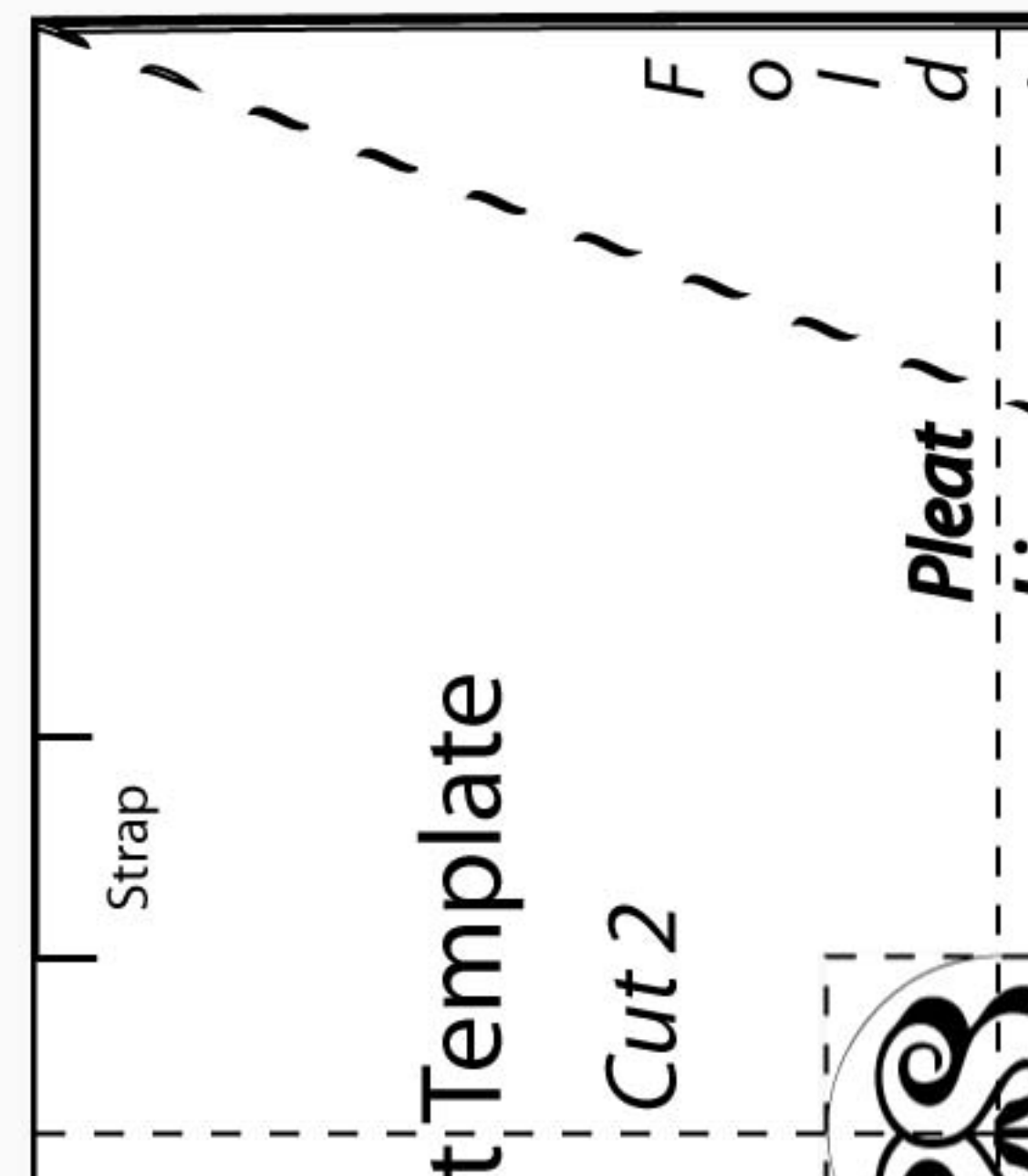
i  
n  
e

*Outer Shell  
Interfacing  
and  
or Lining*



Pleat





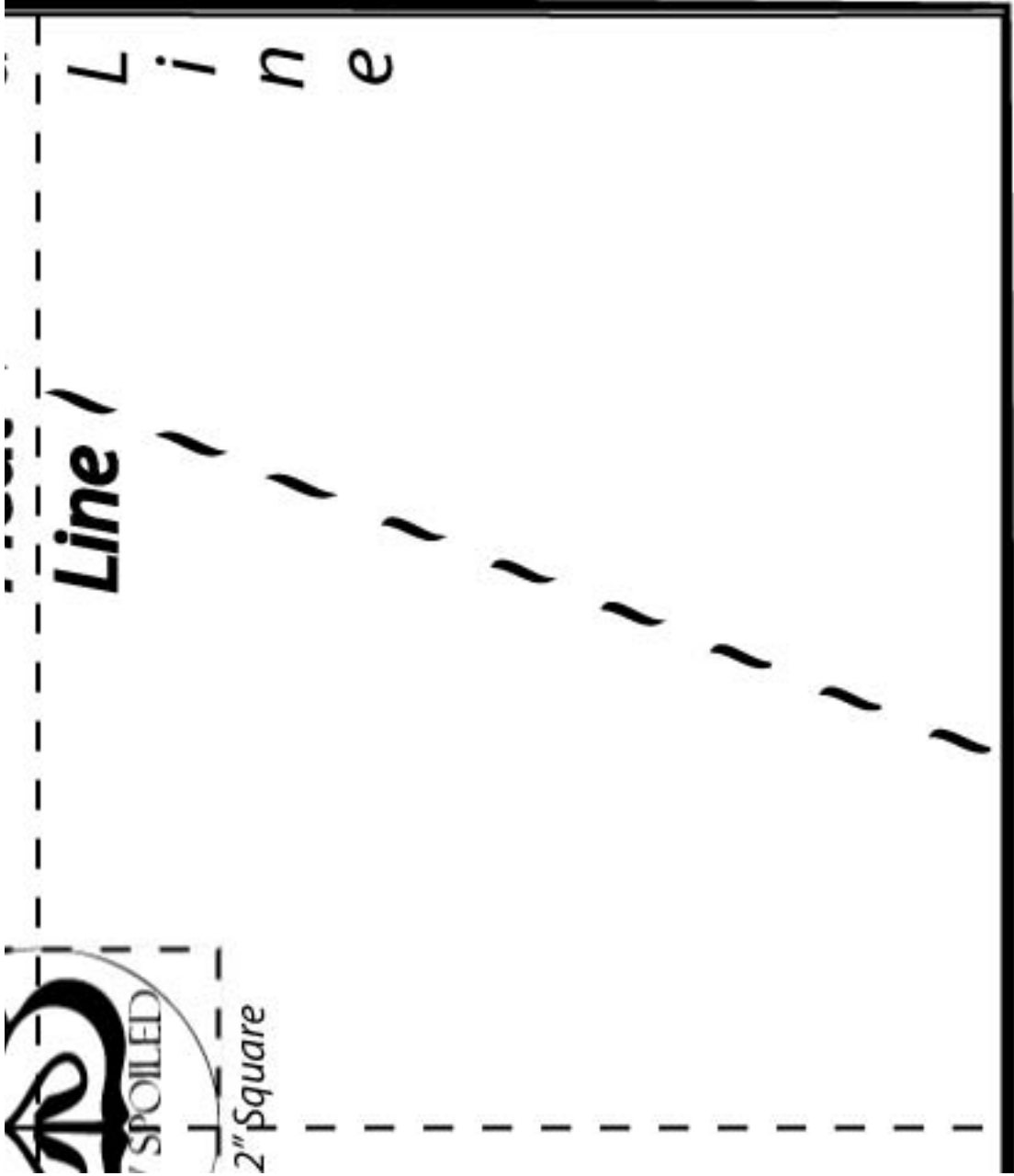
Strap

tTemplate

Cut 2

Fold

Pleat



**Line**

L i n e



Interior



*Cut 1 from*

*Cut 1 from*

*and*

*1 Interf*

# or Pocket



2" square

om Fabric B

om Fabric E

and

erfacing

*F  
o  
l  
d  
L  
i  
n  
e*